



Ezi Trellis

Specification Document

Ezi-roll Queensland
20 Randle Rd,
Pinkenba QLD 4008
Ph: (07) 3260 1080
Fax: (07) 3260 1027
sales@eziroll.com.au

Ezi-roll Victoria
14 Fillo Drive
Somerton VIC 3062
Ph: (03) 9357 0749
Fax: (03) 9357 6988
vicsales@eziroll.com.au

Ezi-roll South Australia
82 Daws Rd
Edwardstown SA 5039
Ph: (08) 8374 0111
Fax: (08) 8374 0133
sasales@eziroll.com.au

Ezi Trellis

The Ezi Trellis is a patented heavy duty aluminium trellis type door manufactured by Ezi-roll Doors Australia and forms part of the Ezi-roll security grille products range. The strong aluminium curtain is specifically designed from heavy walled architectural aluminium to provide a high level of security whilst maintaining the feel of openness between the internal and external spaces.

The Ezi Trellis is recommended for applications such as retail shopfronts, arcades, clubs, bars, counter tops. The Ezi Trellis is a viable alternative where there is limited or no head room and where ventilation is required. The Ezi Trellis comes in a standard Black powder coat finish.

Ezi-roll Trellis Aluminium Concertina Closure

The Ezi Trellis is a trellis door comprising 25 x 25 mm square aluminium sections with 25 x 6 mm flat bar vertical members and 25 x 6 mm expanding bars.

The Ezi Trellis is a viable alternative where there is limited or no head room and where ventilation is required. For openings up to 3.8 m high and unlimited widths.

History

ezi-roll Doors Australia has been manufacturing industrial and commercial doors since 1971. Since its inception, ezi-roll Doors Australia has been continuously developing its products in both design and manufacturing efficiencies. The Ezi Trellis is one example and it is featured below.

Recommended Application

The Ezi Trellis is suitable for openings 1.5 metres to 3.8 metres high and can span any width. This cost efficient door is suitable for applications requiring ventilation and a high level of security where a roller shutter or door is not desirable. Suitable applications are shopping centre shopfronts, arcades, sporting complexes, clubs, bars and countertops.

The Trellis Door

The Ezi Trellis door is constructed entirely from aluminium using 25mm x 6mm flat bars and 25mm x 25mm square tubing. The expanding members are also fabricated from 25mm x 6mm aluminium and the entire assembly is held together by our patented security system. This security system is fabricated from high strength nylon and as such is not susceptible to rust. This combined with the aluminium members makes the assembly very versatile in the type of areas where it may be used.

Versatile Tracking System

The Ezi Trellis is supplied with a 43mm x 35mm ceiling hanging tracking system. The Ezi Trellis is fitted with heavy duty bearing ensuring ease of operation and sustained door life.

The floor track allowing can be surface mounted with a removable section ensuring there is no interruption to the pedestrian space, reducing the risk of tripping hazards or it may be fully recessed into the floor surface.

Architectural Specification

Proprietary Item: Ezi-roll Ezi Trellis door. Refer to technical drawings for locations.

Door Curtain: 25mm x 25mm heavy duty square aluminium sections with 25mm x 6mm flat bar vertical members. Along with 25mm x mm expanding bars. And high grade plastic security system.

Size: for openings up to 3.8mtrs high and across any width.

Tracking: extruded 43 x 35mm track with heavy duty bearing assemblies at top with either removable surface mounted or fixed recessed floor track.

Finish: the Ezi Trellis Aluminium Roller Shutter is supplied standard in a black powder coat.

Installation

General

Requirement: install overhead doors in conformance with Ezi-roll's recommendations and as documented.

Preparation

Substrate: before starting installation, check the alignment of substrates or framing and adjust if required.

Clearances: confirm clearances as per shop drawing. Check openings accommodate support brackets and door guides with the required clearances.

Assembly: assemble guide parts, axle parts, driving parts and slats or curtains.

Guide system

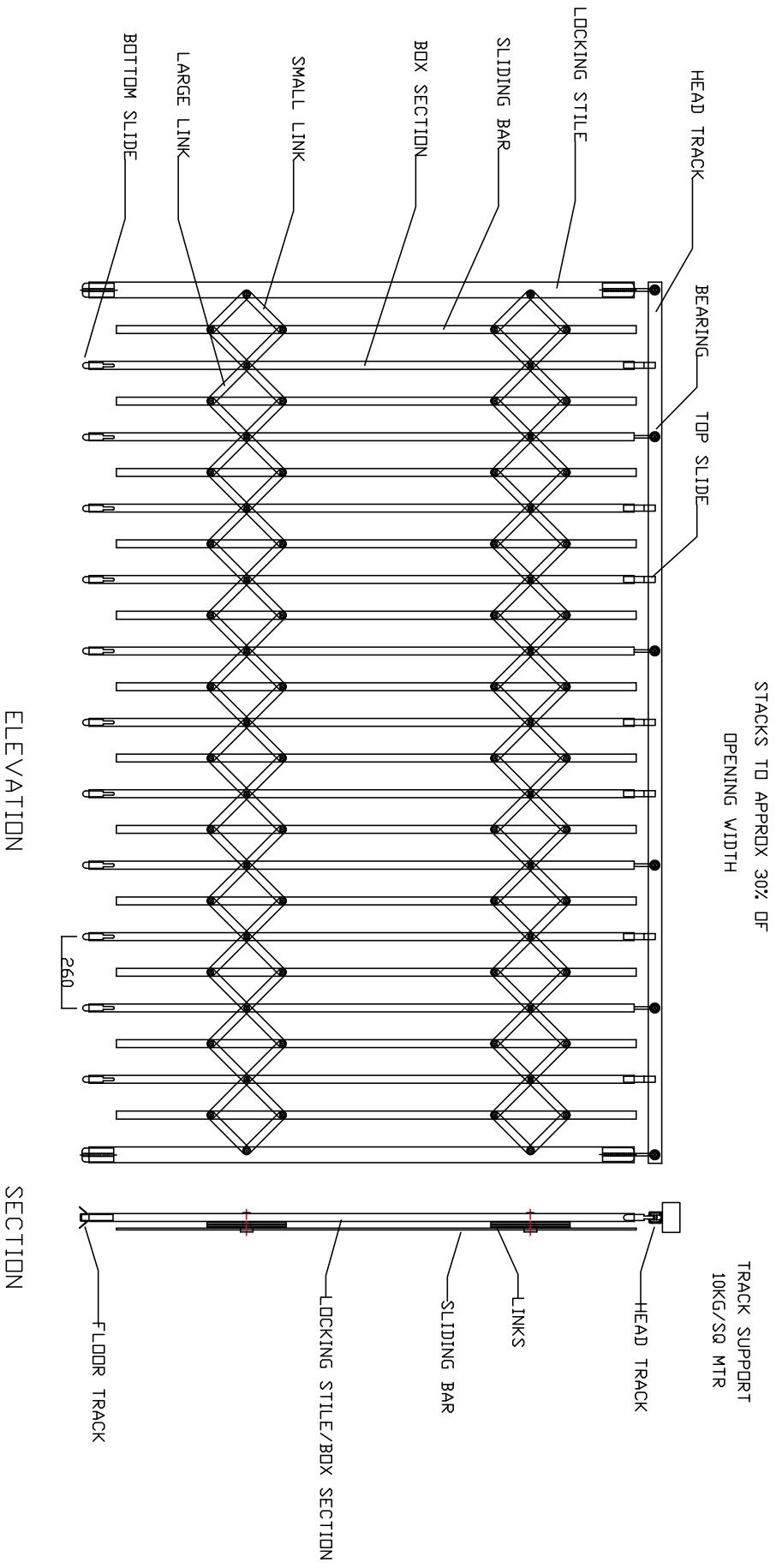
Requirement: install guide system as follows:

- Plumb, level, straight, true, and within tolerances and clearances recommended by the manufacturer and including installation points level at guide ends.
- Fixed or anchored to the building structure using mechanical fixings suitable for the substrate, the imposed loads and the door size.
- Isolated from any building loads, including loads caused by structural deflection or shortening.

Counterbalancing

Requirement: counterbalance steel springs to Ezi-roll's recommendations.

Technical Detail



Operation

Manual operation

General: install so that the force required to operate the door manually is safe and effortless.

Manual method: provide a manual door operating system incorporating the following, as documented:

- Hand stick (for high openings): by a boat hook type pole supplied with the installation.
- Chain: by pulling on a chain passing over a sprocket on the drum, with reduction gears where necessary.

Motorised operation

General: provide a motorised door operating system incorporating the following:

Contact Ezi-roll Doors Australia for the range of single and three phase Elsamec GFA – Elektromaten or Grifco electric motors available, depending on usage and application. They can be interfaced with external access devices such as remote control transmitters, exit loops, key pads, card readers or similar.

- A single or three phase electric motor with limit switches, and of adequate capacity to operate the specified door smoothly and without strain.
- Motor type: AC or DC motor (DC motors are generally considered to be quieter.) Ezi-roll motor suppliers include Grifco, GFA – Elektromarten and Uniko for aluminium doors.
- Drive type: Manual, chain or direct drive. Consider structure-borne sound generated by motor and drive, particularly in multi-unit residential buildings.
- Overload cutout.
- Optional photocell or IR beam safety device.
- Optional standard light fixture, automatically switched on when opener is activated, and switched off by timer. (generally retain for single dwelling applications, and not applicable for multi-unit residential, commercial and other applications where other area lighting is provided.)
- Operation by battery-powered radio remote controller, supplied as part of the system.
- Quantity of programmed remote controllers: 2 (can vary depending on project requirements).
- Memory register quantity: this is the maximum number of remote controllers that can be programmed on the door controller (if applicable).
- Additional operation by push-button or key switch, located 1500 mm above floor level or per client request.

Aluminium Bi-folding Curtain Door Schedule

The codes in the header row of the schedule designate each application or location of the item scheduled. Edit the codes to match those in other contract documents.

Product: Ezi Trellis

Guide system: select from removable surface mounted or fixed recessed floor track.

Locking: end stile locking left or right sides.

Completion

Operation

General: make sure moving parts operate freely and smoothly to Ezi-roll's recommendations, without binding or sticking, at correct tensions or operating forces and that they are lubricated where appropriate.

Safety: make sure all safety features are operating and all obstacles removed from the door operating area.

Remote control device: make sure devices are programmed and operating.

Motor limits: set.

Protection

Temporary coating: on or before the date for practical completion of the works, or before joining up to other surfaces, remove all traces of temporary coatings used for protection.

Warranty

A 12 month limited material, labour and workmanship warranty applies to the Ezi Trellis as a standard cycle use product.

Use only where warranties extending beyond the defects liability period are available for the particular system. Insert the required warranty period and terms, which should be negotiated beforehand. If the warranty is in the form of separate material and installation warranties, require the signatures of both manufacturer and installer. The form(s) required should be provided as part of the contract documentation

Aluminium Bi-folding Curtain Door Schedule

	ABO1	ABO2	ABO3
Product			
Frame width			
Stacking operation			
In-fill			
Guide system			
Locking			

Disclaimer

Ezi-roll Doors Australia reserves the right to alter and or improve its products or any accessories at any time without notice and without incurring any obligation to make similar improvements to products previously ordered or sold.