



Ezi-roll Queensland
20 Randle Rd,
Pinkenba QLD 4008
Ph: (07) 3260 1080
Fax: (07) 3260 1027
sales@eziroll.com.au

Ezi-roll Victoria
14 Fillo Drive
Somerton VIC 3062
Ph: (03) 9357 0749
Fax: (03) 9357 6988
vicsales@eziroll.com.au

Ezi-roll South Australia
82 Daws Rd
Edwardstown SA 5039
Ph: (08) 8374 0111
Fax: (08) 8374 0133
sasales@eziroll.com.au

www.eziroll.com.au

Ezi 90 Ali

Specification Document

Ezi-roll Aluminium Roller Shutter

The Ezi 90 Ali is an aluminium roller shutter manufactured by Ezi-roll Doors Australia and forms part of the Ezi-roll aluminium security door range. This heavy duty aluminium extrusion curtain is specifically designed to ensure maximum security when fitted to retail spaces, secure parking structures, arcades, sporting complexes, clubs, bars and counter tops.

Contemporary in appearance, the Ezi 90 Ali is built using solid aluminium interlocking sections however can be slotted or perforated to suit individual design preferences. The Ezi 90 Ali can be supplied in a vast range of sizes and colour finishes with clear polycarbonate backing also available for the slotted curtain option.

Ezi-roll Aluminium Roller Shutter Doors

The Ezi 90 Ali is constructed from high density aluminium extrusions ensuring maximum door strength. The aesthetics and ventilation of the door may be improved for retail shopfront applications by utilising the slotting option. Where slotting is requested for aesthetics only, a clear polycarbonate backing panel can be supplied for each interlocked slat within the curtain. Alternative aluminium slats are fitted with nylon moulded end clips to reduce friction and lateral movement. The Ezi 90 Ali is supplied standard in a clear anodised finish (matt natural) however aluminium components may be powder coated as an optional extra.

History

Ezi-roll Doors Australia has been manufacturing roller shutters and grilles since 1971. Since its inception has been continuously developing its suite of products in both design and manufacturing efficiencies. The Ezi 90 Ali aluminium roller shutter is one example and it is featured below.

Recommended Application

The Ezi 90 Ali is suitable for openings ranging from 1m - 4.5m high and up to 8m wide. This shutter is ideal for applications requiring a high level of security while remaining attractively contemporary. Suitable applications are shopping centre shopfronts, secure parking structures arcades, sporting complexes, clubs, bars and counter tops.

Spring Assisted Drum Assembly

The spring assisted counterbalanced roller drum is fabricated from high quality steel spiral ducted tube or spiral welded tube. The central shaft carries helical springs to ensure a smooth and effortless operation.

Bottom Rail

The Ezi 90 Ali is supplied with a sturdy T-Rail aluminium bottom rail which provides additional strength to the door. This bottom rail may be supplied with an optional weather seal to prevent the unwanted entry of foreign particles.

Architectural Specification

Proprietary Item: Ezi-roll "Aluminium Roller Shutter" Ezi 90 Ali or equal approved. Refer to technical drawings for locations.

Door Curtain: 90mm x 1.4mm aluminium extrusion. Alternative aluminium sections are fitted with nylon end clips to reduce friction. Running in 100mm x 38mm extruded guides. Clear anodised or powder coat finish.

Size: for openings up to 4.5m high & 8m wide.

Perforations: provide 6.5mm diameter perforation holes at 9mm centres.

Slotting: provide from 160mm x 60mm to 600mm x 60mm vent slots at determined spacing required in the roller shutter. Slotting may include polycarbonate backing panel to reduce foreign particle entrance.

Roller Drum: 165mm or 229mm spiral drum rotating on a heavy duty shaft fitted with helical springs to counterbalance the door in accordance with the manufacturers specifications.

Operation: roller shutter can be either manually operated or motorized depending upon size requirements.

Ventilation: the perforation will provide a maximum of 26% free air flow per lineal meter of slat.

The 160mm x 60mm slotting will provide a maximum of 48% free air flow per lineal meter of slat.

The 600mm x 60mm slotting will provide a maximum of 58% free air flow per lineal meter of slat.

Installation

General

Requirement: install overhead doors in conformance with Ezi-roll's recommendations and as documented.

Preparation

Substrate: before starting installation, check the alignment of substrates or framing and adjust if required.

Clearances: confirm clearances as per shop drawing. Check openings accommodate support brackets and door guides with the required clearances.

Assembly: assemble guide parts, axle parts driving parts and curtain.

Guide system

Requirement: install guide system as follows:

- Plumb, level, straight, true, and within tolerances and clearances recommended by the manufacturer and including installation points level at guide ends.
- Fixed or anchored to the building structure using mechanical fixings suitable for the substrate, the imposed loads and the door size.
- Isolated from any building loads, including loads caused by structural deflection or shortening.

Counterbalancing

Requirement: counterbalance steel springs to Ezi-roll's recommendations.

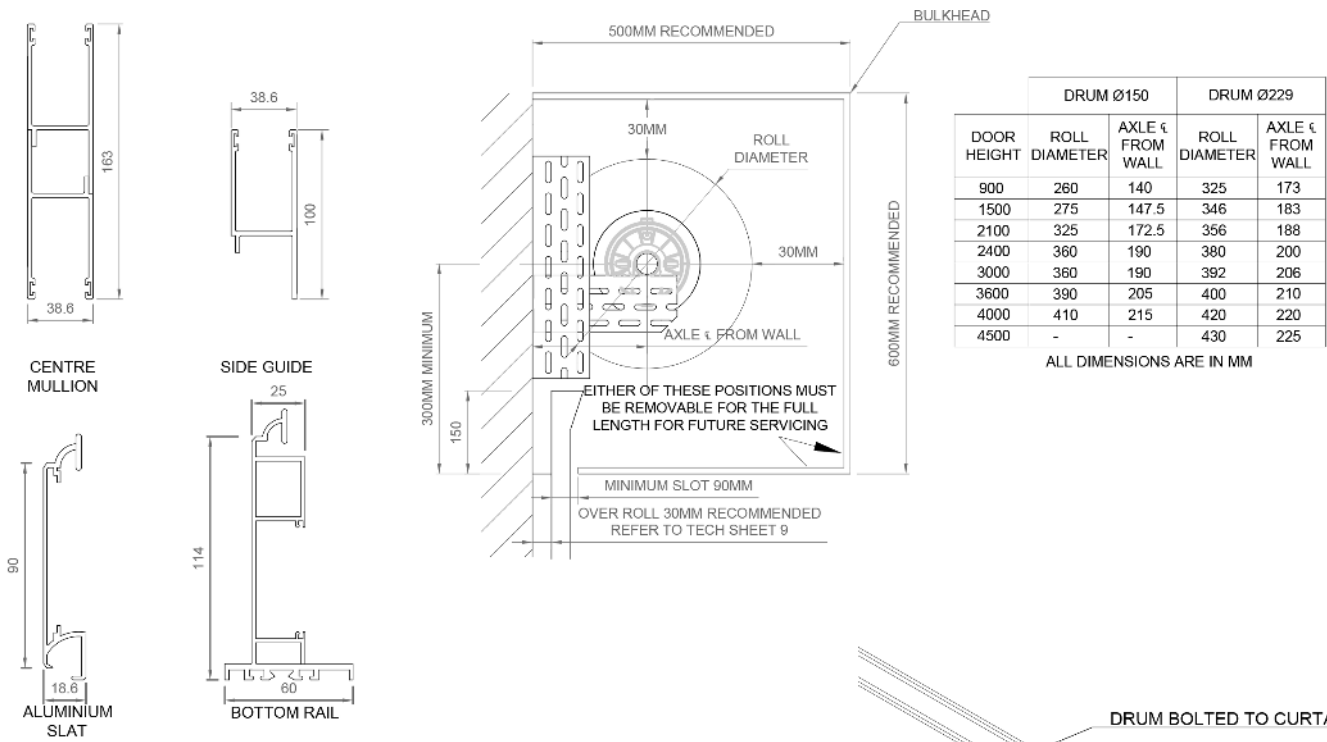
Versatile Tracking System

The 100mm x 38mm aluminium door tracks can be mounted between fix or behind fix. The guides can also accommodate a mohair felt buffer to ensure a quieter operation. All manual doors are fitted with door stops.

Locking

The Ezi 90 Ali may be fitted with a centrally mounted locking mechanism within the bottom rail. The locking mechanisms are generally concealed behind extruded polycarbonate covers for aesthetics and tamper proofing. Locking is not recommended for motorised doors.

Technical Detail

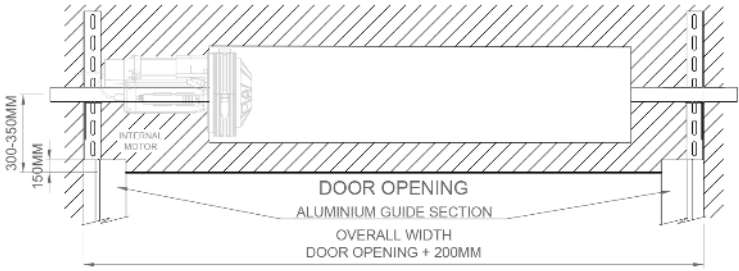


BEHIND WALL FIX

TOP VIEW

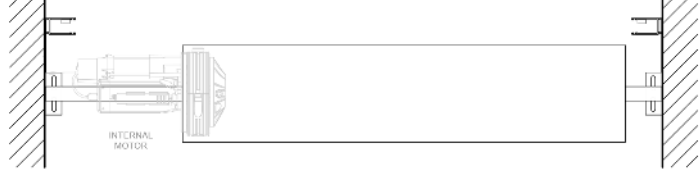


ELEVATION VIEW

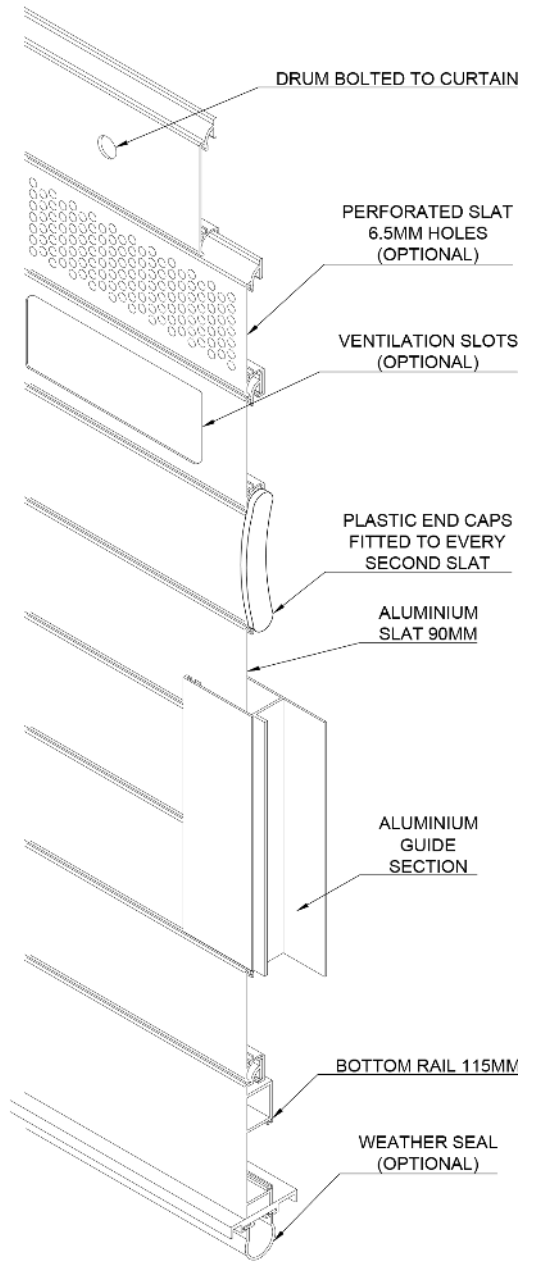
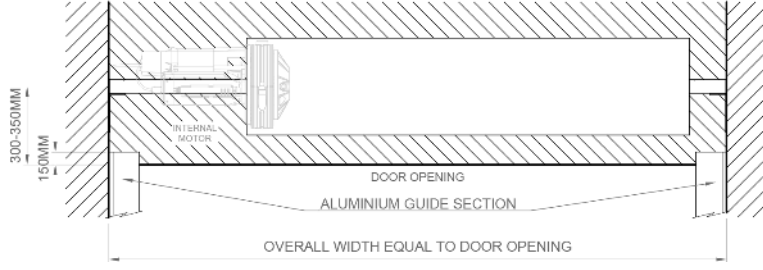


BETWEEN WALL FIX

TOP VIEW



ELEVATION VIEW



Wind Rating

Aluminium products are available with a wind rating. Contact Ezi-roll for more details.

Manual/Automatic Operation

The Ezi 90 Ali can be manually or electrically operated. There is a range of electric motors available depending on application and usage

Operation

Manual operation

General: install so that the force required to operate the door manually is safe and effortless.

Manual method: provide a manual door operating system incorporating the following, as documented:

- Hand stick (for high openings): by a boat hook type pole supplied with the installation.
- Chain: by pulling on a chain passing over a sprocket on the drum, with reduction gears where necessary.

Motorised operation

General: provide a motorised door operating system incorporating the following:

Contact Ezi-roll Doors Australia for the range of single and three phase Elsamec GFA – Elektromaten or Grifco electric motors available, depending on usage and application. They can be interfaced with external access devices such as remote control transmitters, exit loops, key pads, card readers or similar.

- A single or three phase electric motor with limit switches, and of adequate capacity to operate the specified door smoothly and without strain.
- Motor type: AC or DC motor (DC motors are generally considered to be quieter). Ezi-roll motor suppliers include Grifco, GFA – Elektromarten, Ezi-roll – ECR 600 and Elsamec for aluminium doors.
- Drive type: manual, chain or direct drive. Consider structure-borne sound generated by motor and drive, particularly in multi-unit residential buildings.
- Overload cutout.
- Optional photocell or IR beam safety device.
- Optional standard light fixture, automatically switched on when opener is activated, and switched off by timer (generally retain for single dwelling applications, and not applicable for multi-unit residential, commercial and other applications where other area lighting is provided).
- Manual release handle to disengage door from drive mechanism in the event of a power failure.
- Operation by battery-powered radio remote controller, supplied as part of the system.
- Quantity of programmed remote controllers: 2 (can vary depending on project requirements).
- Additional operation by push-button or key switch, located 1500 mm above floor level or per client request.

Aluminium Roller Shutter Door Schedule

The codes in the header row of the schedule designate each application or location of the item scheduled. Edit the codes to match those in other contract documents.

Product: Ezi 90 Ali.

Frequency of use: contact Ezi-roll Doors Australia for Ezi-roll's high and low cycle use products.

Door finish: select from clear anodised or powder coated.

Bottom rail weatherseal: e.g. required, or not required.

Slots: select from 160 x 60 mm vent slots, providing 46% free air flow per lineal metre of slat, or 600 x 60 mm vent slots, providing 58% free air flow per lineal metre of slat. If required, add polycarbonate backing panel to slots to reduce foreign particle entrance - there will be no free air flow if this is selected.

Perforations: e.g. required, or not required.

Counterbalance spring: contact Ezi-roll Doors Australia. High cycle steel springs. *Dependant on the application.*

Guide system: select from between fix or behind fix. Centre mullions are also available.

Mohair buffers: e.g. required, or not required.

Guides can accommodate a mohair felt buffer for quieter operation.

Drum: spiral wound or spiral welded.

Contact Ezi-roll Doors Australia for selection, depending on door size and application.

Sized to suit the door. Contact Ezi-roll Doors Australia.

Operation: select from

- Manual: hand lift or chain lift.
- Motorised: direct drive or chain drive.

Locking: not recommended motorised doors. Can be centrally mounted lock or within bottom rail.

Completion

Operation

General: make sure moving parts operate freely and smoothly to Ezi-roll's recommendations, without binding or sticking, at correct tensions or operating forces and that they are lubricated where appropriate.

Safety: make sure all safety features are operating and all obstacles removed from the door operating area.

Remote control device: make sure devices are programmed and operating.

Motor limits: set.

Protection

Temporary coating: on or before the date for practical completion of the works, or before joining up to other surfaces, remove all traces of temporary coatings used for protection.

Warranty

A 12 month limited material, labour and workmanship warranty applies to the Ezi 90 Ali as a standard cycle use product.

Use only where warranties extending beyond the defects liability period are available for the particular system. Insert the required warranty period and terms, which should be negotiated beforehand. If the warranty is in the form of separate material and installation warranties, require the signatures of both manufacturer and installer. The form(s) required should be provided as part of the contract documentation.

Aluminium Rolling Grille Door Schedule

	AGO1	AGO2	AGO3
Product			
Frequency of use (cycles per year)			
Door finish			
Bottom rail weatherseal			
Slots			
Perforations			
Counterbalance spring			
Guide System			
Mohair buffers			
Drum			
Operation			
Locking			

Disclaimer

Ezi-roll Doors Australia reserves the right to alter and or improve its products or any accessories at any time without notice and without incurring any obligation to make similar improvements to products previously ordered or sold.