



# Ezi 115 Steel

## Specification Document

**Ezi-roll Queensland**  
20 Randle Rd,  
Pinkenba QLD 4008  
Ph: (07) 3260 1080  
Fax: (07) 3260 1027  
sales@eziroll.com.au

**Ezi-roll Victoria**  
14 Fillo Drive  
Somerton VIC 3062  
Ph: (03) 9357 0749  
Fax: (03) 9357 6988  
vicsales@eziroll.com.au

**Ezi-roll South Australia**  
82 Daws Rd  
Edwardstown SA 5039  
Ph: (08) 8374 0111  
Fax: (08) 8374 0133  
sasales@eziroll.com.au

# Ezi-roll Industrial Steel Roller Shutter

*The Ezi 115 Steel is a steel industrial roller shutter manufactured by Ezi-roll Doors Australia and forms part of the Ezi-roll industrial steel roller shutter range. The contemporary aesthetic of this commercial roller shutter will ensure it compliments even the most modern industrial building. The Ezi 115 Steel offers additional protection against wind damage and intruders through its standard inclusion of the Ezi-roll patented wind lock system. The Ezi 115 Steel is quick and easy to install ensuring the interruption to the building process or day to day business operations is minimal. The Ezi 115 Steel is available standard in a galvanised finish or can be powder coated to suit. A range of slotting and perforation options are available on request.*

## History

Ezi-roll Doors Australia has been manufacturing roller shutters and grilles since 1971. Since its inception Ezi-roll has been continuously developing its suite of products in both design and manufacturing efficiencies. The Ezi 115 Steel is one example and it is featured below.

## Patented Windlock System

All Ezi-roll steel shutters are supplied standard with its unique and patented wind lock system. This system means that every slat is wind locked, giving the doors unparalleled advantage in wind resilience and intruder protection. All Ezi-roll steel shutters are designed to meet cyclonic wind categories.

## Unique Pretensioned Axle Assembly

Unlike the conventional torsion spring shaft of mainstream roller shutters, the Ezi-roll roller shutter has been designed using specially treated strip type springs which are matched to perfectly counter balance the door. The Ezi-roll door axle assembly is supplied already pre tensioned making it extremely easy and safer to manage when installing or to field service.

## Quick Installation

Easy and quick to install. The Ezi-roll shutter is by far the easiest and quickest roller shutter to install. Often an Ezi-roll shutter can be installed in less than half of the time that it takes to install a conventional shutter, resulting in minimal interruption to the building construction process.

## Operation

Motorised: roller shutters to be fitted with a single or three phase motor, gearbox, drive sprockets, chain, up/down/stop wall mounted controls, and an emergency hand chain in case of power failure.

Manual Chain Hoist: roller shutters are fitted with an extra heavy duty hoist, manual chain and wall mounted chain lock.

## Installation

### General

Requirement: install overhead doors in conformance with Ezi-roll's recommendations and as documented.

### Preparation

Substrate: before starting installation, check the alignment of substrates or framing and adjust if required.

Clearances: confirm clearances as per shop drawing. Check openings accommodate support brackets and door guides with the required clearances.

Assembly: assemble guide parts, axle parts, driving parts and slats or curtains.

### Guide system

Requirement: install guide system as follows:

- Plumb, level, straight, true, and within tolerances and clearances recommended by the manufacturer and including installation points level at guide ends.
- Fixed or anchored to the building structure using mechanical fixings suitable for the substrate, the imposed loads and the door size.
- Isolated from any building loads, including loads caused by structural deflection or shortening.

### Counterbalancing

Requirement: counterbalance steel springs to Ezi-roll's recommendations.

## Modern Contemporary Appearance

Ezi-roll spent years of research and development in designing an industrial roller shutter slat that is architecturally in tune with modern industrial building design, yet strong and practical. This has resulted in a 115mm shutter slat that is easily transported and packed due to its rigid roll formed flat steel face. Due to its sheer face design, the shutter provides a modern and stylish appearance, complementing any mode of commercial architecture.

## Self Supporting

The Ezi-roll shutter is supported with the assistance of its guides. Often built on the ground and then tilted into place, the Ezi-roll shutter places less load requirement on structural supports than its mainstream conventional competitors. Most conventional shutters are installed with the guide and head plate independent of each other, therefore placing all of the weight of the shutter on the head plates which ultimately will require stronger supports and load fixings.

## Shutter Options

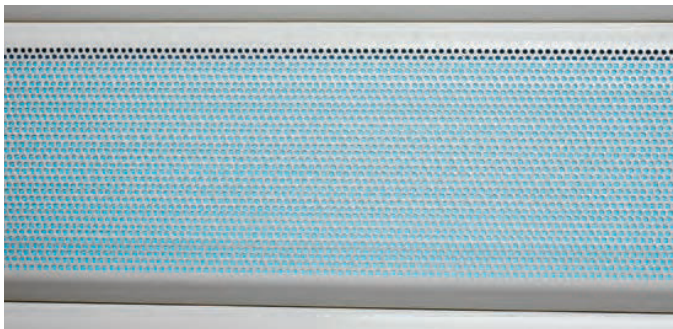
### Standard Option

No ventilation, roll formed, steel ribbed for extra strength and every slat is wind locked.



### Perforated Option

Optional 3mm perforated shutter slats are available on request. Perforation is 90mm high and seen full length of slat. Doors may be fully perforated or partially perforated.



### Vision Slot

Optional 41mm x 100mm rectangular acrylic inserts are available on request. Slots are spaced 66mm apart and are not free flowing. Doors may be fully slotted or partially slotted.



### Diamond Slotted

Optional 80mm x 80mm diamond slotted shutter slats are available on request. Slots are spaced 38mm apart and are free flowing windows. Doors may be fully slotted or partially slotted.



### Oval Slotted

Optional 25mm x 100mm oval slotted shutter slats are available on request. Slots are spaced 65mm apart and are free flowing windows. Doors may be fully slotted or partially slotted.



## Operation

### Manual operation

General: install so that the force required to operate the door manually is safe and effortless.

Manual method: provide a manual door operating system incorporating the following, as documented:

- Hand stick (for high openings): by a boat hook type pole supplied with the installation
- Chain: by pulling on a chain passing over a sprocket on the drum, with reduction gears where necessary.

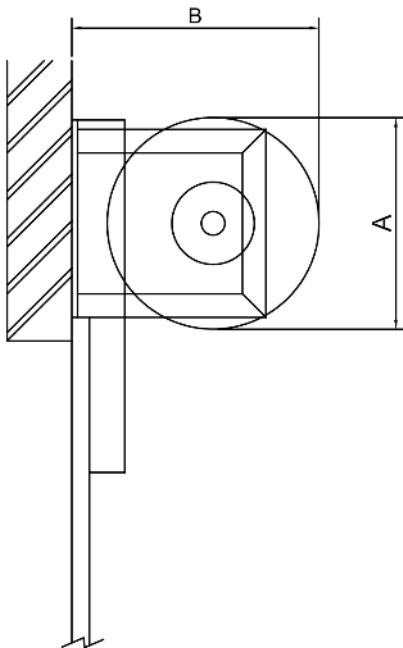
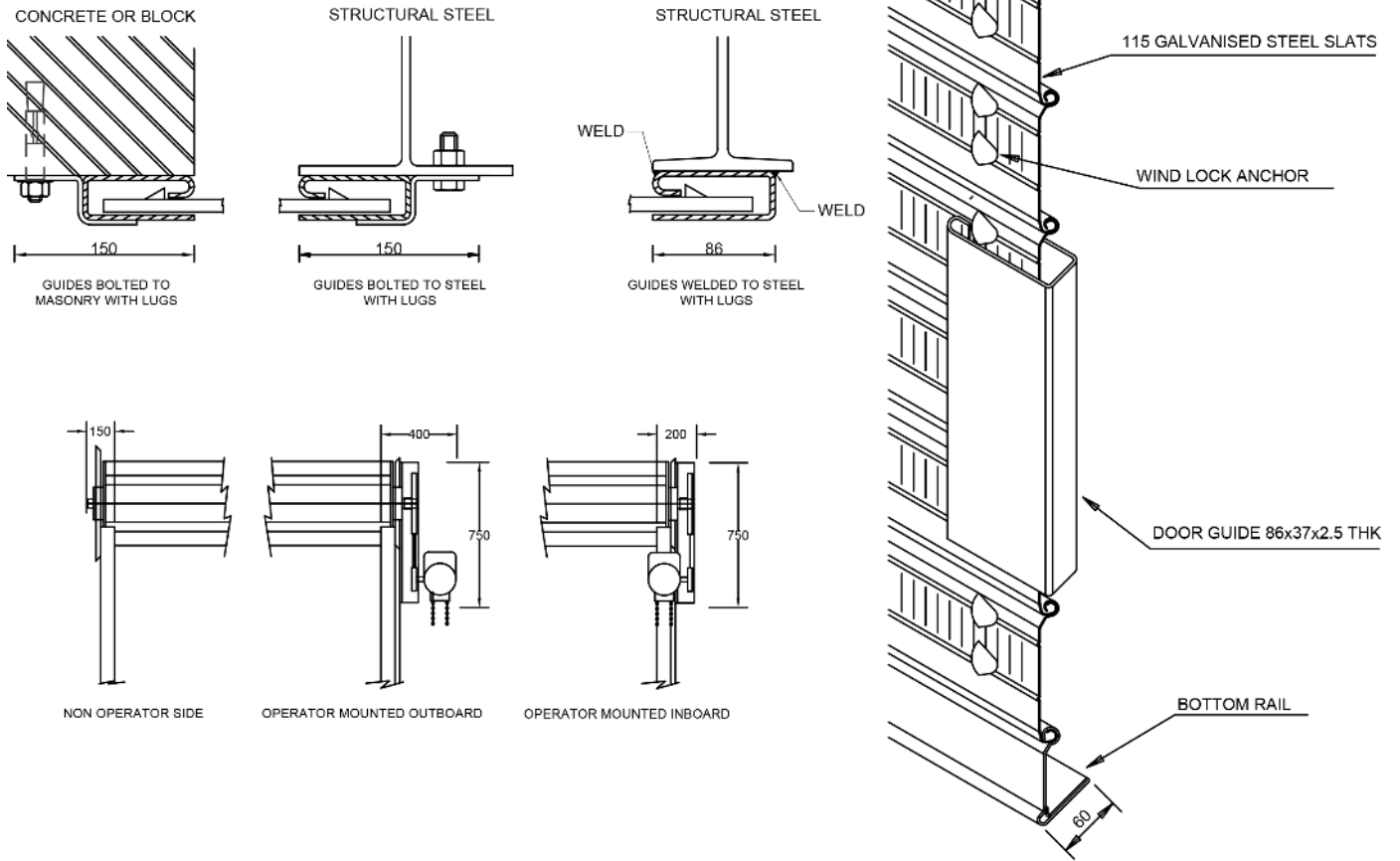
### Motorised operation

General: provide a motorised door operating system incorporating the following:

*Contact Ezi-roll Doors Australia for the range of single and 3 phase GFA – Elektromaten or Grifco electric motors available, depending on usage and application. They can be interfaced with external access devices such as remote control transmitters, exit loops, key pads, card readers or similar.*

- A single or three phase electric motor with limit switches, and of adequate capacity to operate the specified door smoothly and without strain.
- Motor type: AC or DC motor (DC motors are generally considered to be quieter). Ezi-roll motor suppliers include Grifco, GFA – Elektromarten, Ezi-roll – ECR 600 and Elsamec for aluminium doors.
- Drive type: manual, chain or direct drive. Consider structure-borne sound generated by motor and drive, particularly in multi-unit residential buildings.
- Overload cutout.
- Optional photocell or IR beam safety device.
- Optional standard light fixture, automatically switched on when opener is activated, and switched off by timer (generally retain for single dwelling applications, and not applicable for multi-unit residential, commercial and other applications where other area lighting is provided).
- Manual release handle to disengage door from drive mechanism in the event of a power failure.
- Operation by battery-powered radio remote controller, supplied as part of the system.
- Quantity of programmed remote controllers: 2 (can vary depending on project requirements).
- Additional operation by push-button or key switch, located 1500 mm above floor level.

## Technical Detail



DOOR HEIGHT (MM)	ROLL SIZE	HEAD CLEARANCE (A & B)
1000	295	450
2000	315	450
2500	315	450
3000	360	500
3500	360	500
4000	380	500
4500	380	500
5000	390	500
5500	415	500
6000	415	550
6500	430	550
7000	435	600
7500	440	600
8000	465	600
8900	480	600

## Aluminium Rolling Grille Door Schedule

The codes in the header row of the schedule designate each application or location of the item scheduled. Edit the codes to match those in other contract documents.

Product: Ezi 115 Steel

Frequency of use: contact Ezi-roll Doors Australia for high and low cycle use products.

Door finish: select from galvanised or powder coated. If powder coated, include colour.

Bottom rail weatherseal: e.g. required, or not required.

Slots: select from:

- Diamond: 80 x 80 mm vent slots at 38mm apart, providing a maximum of 30% free air flow per lineal metre of slat, across the slat.
- Oval: 25 x 100 mm vent slots at 65 mm centres, providing a maximum of 12.5% free air flow per lineal metre of slat, across the slat.

Steel gauge size: contact Ezi-roll Doors Australia. Select from 0.8, 0.9, 1.0, 1.2 mm to suit size application and wind loads.

Perforations: e.g. required, or not required.

Counterbalance spring: select from standard spring or high cycle steel springs. Contact Ezi-roll Doors Australia.

Guide system: select 2.5 or 3 mm gauge steel, based on door size and wind loading. Contact Ezi-roll Doors Australia.

Fixings: wall mounted fixings selected to suit the substrate, including welded to steel, bolted to steel, fixed to block work or concrete and based on door sizes and wind loading. Contact Ezi-roll Doors Australia.

Operation: select from manual chain hoist or motorised:.

Locking: not recommended for motorised doors. For manually operated doors, select from:

- Internal shoot bolt locking
- External handle

## Completion

### Operation

General: make sure moving parts operate freely and smoothly to Ezi-roll's recommendations, without binding or sticking, at correct tensions or operating forces and that they are lubricated where appropriate.

Safety: make sure all safety features are operating and all obstacles removed from the door operating area.

Remote control device: make sure devices are programmed and operating.

Motor limits: set.

### Protection

Temporary coating: on or before the date for practical completion of the works, or before joining up to other surfaces, remove all traces of temporary coatings used for protection.

## Bottom Rail

Extruded T5 mill finished aluminium bottom rail will be supplied, with a high grade weatherproof seal fitted as standard on doors up to 9 meters wide. Doors greater than 9 meters wide will be fitted with a steel bottom rail, optional weatherproof seal available on request. Mechanical locking can be fitted internally or externally as required to non-motorised doors.

## Architectural Specification

Proprietary Item: Ezi-roll "Industrial Roller Shutter" model number EZI-115 Steel

Door Curtain: interlocking 115mm rib profiled powder coated or galvanised steel slats. Doors can be power coated one side only (standard) or both sides is specified.'

Wind Locks: wind lock anchors provided to each and every slat in conjunction with 86mm x 2.5mm wind lock guides.

Size: 0.8, 0.9, 1.0 or 1.2mm gauge - thickness as recommended by manufacturer to suit size application and wind loads.

Axles & Springs: heavy duty steel pipe of diameter and wall thickness to suit size and mass of roller shutter and designed to give minimum deflection. Counterbalance springs supplied in accordance with manufacturers specification. Each spring cage shall incorporate grease lubricant & bearings.

## Warranty

A 12 month limited material, labour and workmanship warranty applies to the Ezi 115 Steel as a standard cycle use product.

Use only where warranties extending beyond the defects liability period are available for the particular system. Insert the required warranty period and terms, which should be negotiated beforehand. If the warranty is in the form of separate material and installation warranties, require the signatures of both manufacturer and installer. The form(s) required should be provided as part of the contract documentation.

Steel Industrial Roller Shutter Door Schedule

	SIO1	SIO2	SIO3
Product			
Frequency of use (cycles per year)			
Door finish			
Steel gauge size			
Bottom rail weatherseal			
Slots			
Perforations			
Counterbalance spring			
Guide System			
Drum			
Operation			
Wind locks			
Locking			

## Disclaimer

Ezi-roll Doors Australia reserves the right to alter and or improve its products or any accessories at any time without notice and without incurring any obligation to make similar improvements to products previously ordered or sold.