



Ezi 100 Crystal

Specification Document

Ezi-roll Queensland
20 Randle Rd,
Pinkenba QLD 4008
Ph: (07) 3260 1080
Fax: (07) 3260 1027
sales@eziroll.com.au

Ezi-roll Victoria
14 Fillo Drive
Somerton VIC 3062
Ph: (03) 9357 0749
Fax: (03) 9357 6988
vicsales@eziroll.com.au

Ezi-roll South Australia
82 Daws Rd
Edwardstown SA 5039
Ph: (08) 8374 0111
Fax: (08) 8374 0133
sasales@eziroll.com.au

Ezi-roll Aluminium Rolling Shutter Doors

The Ezi 100 Crystal is a polycarbonate roller shutter manufactured by Ezi-roll Doors Australia and is the champion product in the Ezi-roll showcase door range. Contemporary and unique in appearance, the 100% polycarbonate curtain is designed to provide retailers with a door that replicates glass in the shopfront.

The Ezi 100 Crystal is manufactured to provide a secure and aesthetically pleasing addition to high-end store fronts or shopping centre retail spaces allowing the continual showcasing of merchandise, even when the shop is closed. The Ezi 100 Crystal can be supplied with slotted curtain slats where ventilation is required.

Ezi-Roll Full Polycarbonate Roller Shutter

The Ezi 100 Crystal is constructed from interlocking clear polycarbonate extrusions, polycarbonate slats and an aluminium bottom rail. This door is ideal for retailers who wish to maximise their product display potential through 24/7 showcasing.

The Ezi 100 Crystal curtain is an aesthetically pleasing alternative to traditional grilles, while maintaining strength and security. The polycarbonate extrusion is fitted with nylon moulded end clips to reduce friction and lateral movement during operation. The Ezi 100 Crystal is supplied standard in a clear anodised finish (matt natural) however the bottom rail may be powder coated in different colours on request.

History

Ezi-roll Doors Australia has been manufacturing roller shutters and grilles since 1971. Since its inception has been continuously developing its suite of products in both design and manufacturing efficiencies. The Ezi 100 Crystal full polycarbonate roller shutter is one example of this and it is featured below.

Recommended Application

The Ezi 100 Crystal is suitable for openings ranging from 1m-3.5m high and up to 3m wide. Where openings are greater than 3m in width, multiple doors may be used. The Ezi 100 Crystal is ideal for applications where a contemporary and aesthetically pleasing appearance is required including shopping centre retail spaces, street-facing shop fronts, arcades, sporting complexes, clubs and bars.

Spring Assisted Drum Assembly

The spring assisted counterbalanced roller drum is fabricated from high quality steel spiral ducted tube or spiral welded tube. The central shaft carries helical springs to ensure a smooth and effortless operation.

Bottom Rail

The Ezi 100 Crystal is supplied with an aluminium bottom rail. An optional weather seal can be provided upon request, to prevent the entry of foreign particles.

Architectural Specification

Proprietary Item: Ezi-roll "Aluminium Roller Shutter" Ezi 100 Crystal or equal approved. *Refer to technical drawings for locations.*

Door Curtain: polycarbonate door curtain with polycarbonate extrusion.

Size: for openings up to 3.5m high and 3m wide.

Perforations: provide 95mm x 25mm vent slots at 70mm spacing where required in the roller shutter.

Roller Drum: 229mm spiral drum rotating on a heavy duty shaft fitted with helical springs to counterbalance the door in accordance with the manufacturers specifications.

Operation: roller shutter can be either manually operated or motorised depending upon size requirements.

Ventilation: it can be supplied with slotted curtain slats where ventilation is required.

Installation

General

Requirement: install overhead doors in conformance with Ezi-roll's recommendations and as documented.

Preparation

Substrate: before starting installation, check the alignment of substrates or framing and adjust if required.

Clearances: confirm clearances as per shop drawing. Check openings accommodate support brackets and door guides with the required clearances.

Assembly: assemble guide parts, axle parts and driving parts.

Guide system

Requirement: install guide system as follows:

- Plumb, level, straight, true, and within tolerances and clearances recommended by the manufacturer and including installation points level at guide ends.
- Fixed or anchored to the building structure using mechanical fixings suitable for the substrate, the imposed loads and the door size.
- Isolated from any building loads, including loads caused by structural deflection or shortening

Counterbalancing

Requirement: counterbalance steel springs to Ezi-roll's recommendations.

Manual/Automatic Operation

The Ezi 100 Crystal can be manually or electrically operated. There is a range of electric motors available depending on application and usage.

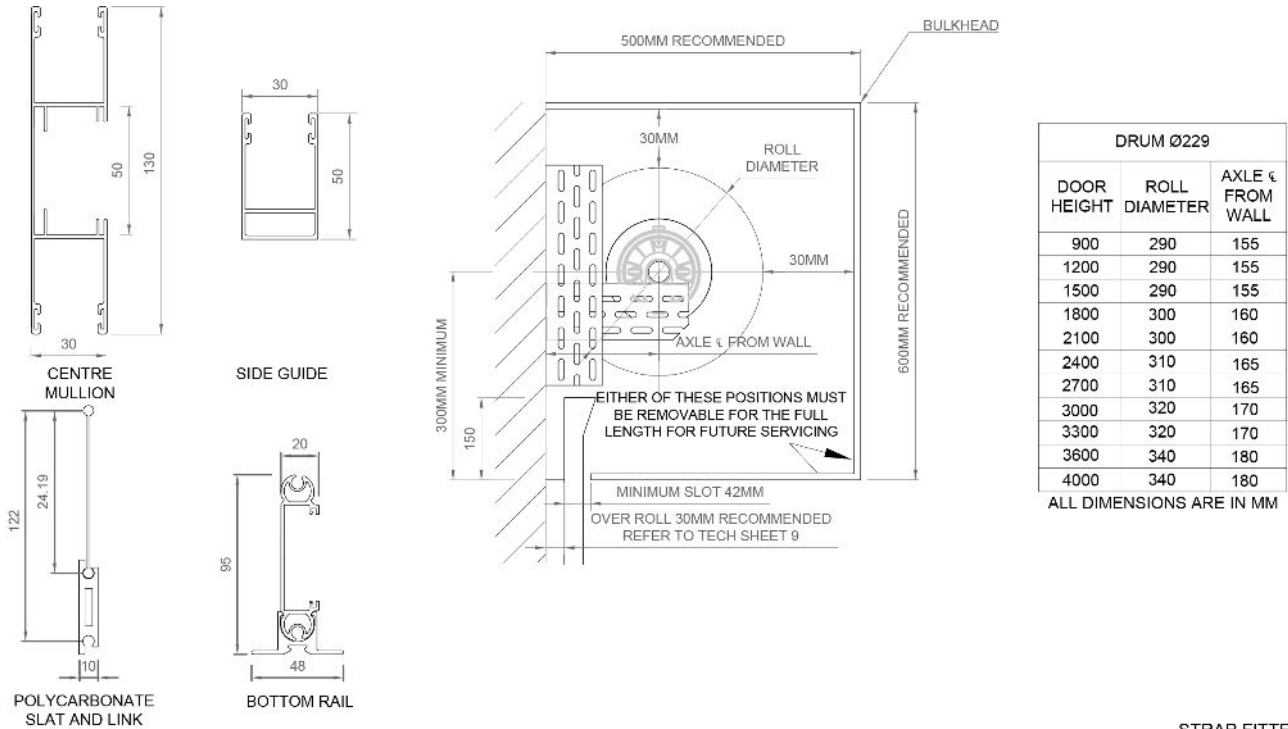
Versatile Tracking System

The Ezi 100 Crystal is installed with 50mm x 30mm aluminium door tracks which can be mounted between fix or behind fix. The guides can also accommodate a rubber twin fin extrusion or mohair felt buffer to ensure a quieter operation. All manual doors are fitted with door stops.

Locking

The Ezi 100 Crystal may be fitted with a centrally mounted locking mechanism within the bottom rail. Manual door locking mechanisms are not recommended for automatically operated doors.

Technical Detail

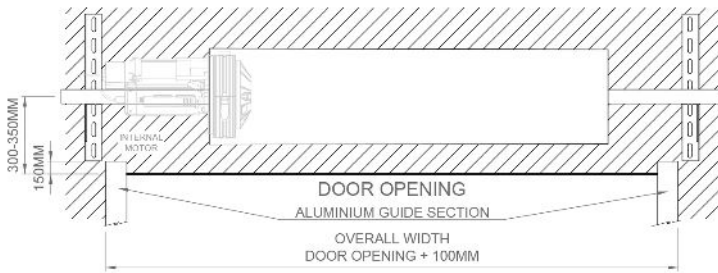


BEHIND WALL FIX

TOP VIEW

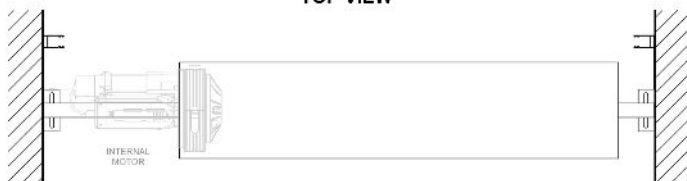


ELEVATION VIEW

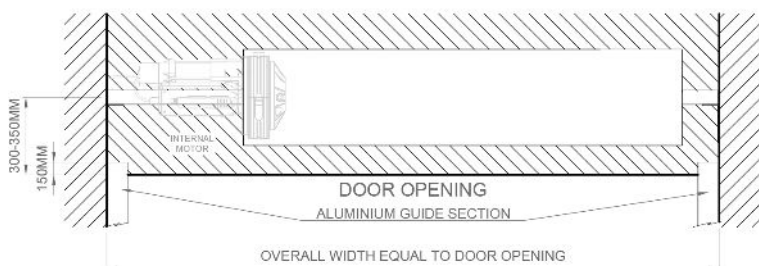


BETWEEN WALL FIX

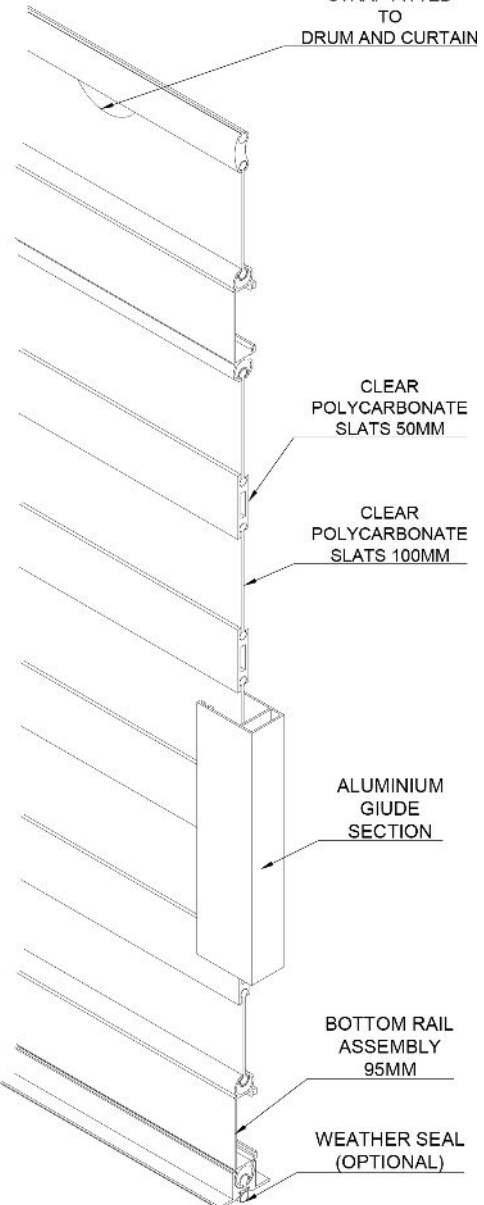
TOP VIEW



ELEVATION VIEW



STRAP FITTED TO DRUM AND CURTAIN



Operation

Manual operation

General: install so that the force required to operate the door manually is safe and effortless.

Manual method: provide a manual door operating system incorporating the following, as documented:

- Hand stick (for high openings): by a boat hook type pole supplied with the installation.
- Chain: by pulling on a chain passing over a sprocket on the drum, with reduction gears where necessary.

Motorised operation

General: provide a motorised door operating system incorporating the following:

Contact Ezi-roll Doors Australia for the range of single and three phase Elsamec GFA – Elektromaten or Grifco electric motors available, depending on usage and application. They can be interfaced with external access devices such as remote control transmitters, exit loops, key pads, card readers or similar.

- A single or three phase electric motor with limit switches, and of adequate capacity to operate the specified door smoothly and without strain.
- Motor type: AC or DC motor (DC motors are generally considered to be quieter). Ezi-roll motor suppliers include Grifco, GFA – Elektromarten and for aluminium doors.
- Drive type: manual, chain or direct drive. Consider structure-borne sound generated by motor and drive, particularly in multi-unit residential buildings.
- Overload cutout.
- Optional photocell or IR beam safety device.
- Optional standard light fixture, automatically switched on when opener is activated, and switched off by timer (generally retain for single dwelling applications, and not applicable for multi-unit residential, commercial and other applications where other area lighting is provided).
- Manual release handle to disengage door from drive mechanism in the event of a power failure.
- Operation by battery-powered radio remote controller, supplied as part of the system.
- Quantity of programmed remote controllers: 2 (can vary depending on project requirements).
- Additional operation by push-button or key switch, located 1500 mm above floor level or per client request.

Aluminium Rolling Grille Door Schedule

The codes in the header row of the schedule designate each application or location of the item scheduled. Edit the codes to match those in other contract documents.

Product: Ezi 100 Crystal.

Frequency of use: contact Ezi-roll Doors Australia for Ezi-roll's high and low cycle use products.

Bottom rail weatherseal: e.g. required, or not required.

Slots: e.g. required, or not required.

Counterbalance spring: contact Ezi-roll Doors Australia. Standard spring.

Guide system: select from between fix or behind fix.

Centre mullions are also available.

Mohair buffers: eg. required, or not required.

Guides can accommodate a mohair felt buffer for quieter operation.

Drum: spiral wound or spiral welded.

Contact Ezi-roll Doors Australia for selection, depending on door size and application.

Sized to suit the door. Contact Ezi-roll Doors Australia.

Operation: select from

- Manual: hand lift or chain lift.
- Motorised: direct drive or chain drive.

Locking: not recommended for motorised doors. Centrally mounted lock within bottom rail.

Completion

Operation

General: make sure moving parts operate freely and smoothly to Ezi-roll's recommendations, without binding or sticking, at correct tensions or operating forces and that they are lubricated where appropriate.

Safety: make sure all safety features are operating and all obstacles removed from the door operating area.

Remote control device: make sure devices are programmed and operating.

Motor limits: set.

Protection

Temporary coating: on or before the date for practical completion of the works, or before joining up to other surfaces, remove all traces of temporary coatings used for protection.

Warranty

A 12 month limited material, labour and workmanship warranty applies to the Ezi 100 Crystal as a standard cycle use product.

Use only where warranties extending beyond the defects liability period are available for the particular system. Insert the required warranty period and terms, which should be negotiated beforehand. If the warranty is in the form of separate material and installation warranties, require the signatures of both manufacturer and installer. The form(s) required should be provided as part of the contract documentation

Aluminium Rolling Shutter Door Schedule

	ASO1	ASO2	ASO3
Product			
Frequency of use (cycles per year)			
Door finish			
Bottom rail weatherseal			
Slots			
Perforations			
Counterbalance spring			
Guide System			
Mohair buffers			
Drum			
Operation			
Locking			

Disclaimer

Ezi-roll Doors Australia reserves the right to alter and or improve its products or any accessories at any time without notice and without incurring any obligation to make similar improvements to products previously ordered or sold.